



POWER CRYPTO MATRIX

FUELING DOLLARS STRAIGHT TO YOUR WALLET

GUIDE



INTRODUCTION

Welcome to **Power Crypto Matrix (PMC)**, an innovative **2x1 personal force matrix** designed to empower individuals with financial freedom and unlimited earning potential. With a unique structure that supports earning at every level, PMC offers features that are unlike any other matrix available in the market today.

WHAT'S NEW IN OUR MATRIX

1. Referral Commissions at Every Level:

- Earn referral commissions from each level within the PMC, ensuring continuous earnings.

2. 100% Matching Bonus:

- Receive a full matching bonus on your referrals' earnings, maximizing your income potential.



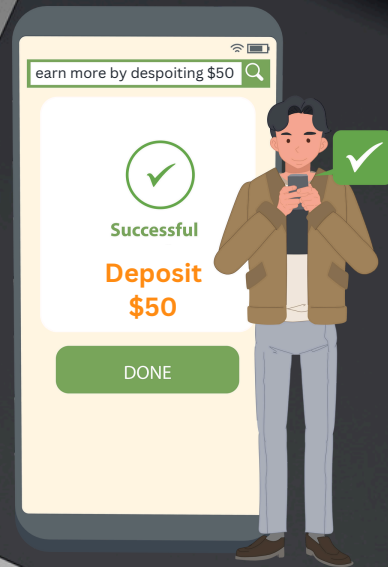
PCM
POWER CRYPTO MATRIX

HOW TO DEPOSIT FUNDS



Step 1: Make Your Deposit

- Minimum Deposit: **\$5**
- Accepted Cryptocurrencies:
 - TRX (TRC20)
 - USDT (TRC20)
 - BTC
 - LTC
- **Note: The minimum deposit is required by our payment processor, CoinPayments, to ensure secure transactions.**



HOW TO PURCHASE POSITIONS

Step 2: Buy Your Positions

- **Flexible Purchasing:**
 - Purchase any number of positions at any level without needing to start from lower levels.
- **Maximize Your Earnings:**
 - Higher-level purchases result in faster earnings.



PCEM
POWER CRYPTO MATRIX

PAY IT FORWARD (PIF) OPTIONS

Step 3: Engage in PIF Opportunities

- **Personal PIF:**

- Support your personal referrals by covering their position costs.

- **Global PIF Party:**

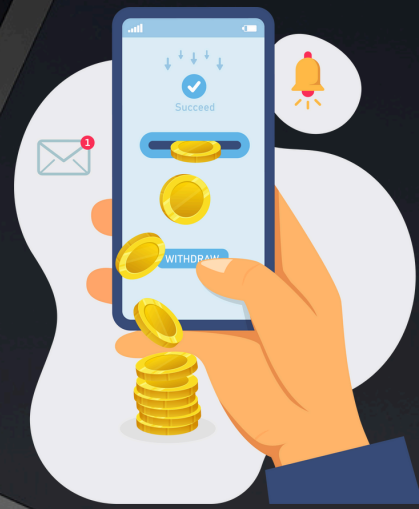
- Participate in our weekly global PIF event, where you can help new members join the community.



WITHDRAWALS & REPURCHASE BALANCE

Step 4: Manage Your Earnings

- **Instant Withdrawals:**
 - Withdrawals are processed instantly in **TRX (TRC20)** with a minimum withdrawal of **\$5**.
- **Repurchase Balance:**
 - A **25%** deduction from your earnings for repurchase enhances your earning potential and supports community growth.



PAYPLAN



POWER CRYPTO MATRIX 1X2 PAYPLAN

\$0.25 Entry Fee **LEVEL IRON** **\$0.05** REFERRAL COMMISSION

MEMBERS	ENTRY FESS	TOTAL	UPGRADE TO BRONZE LEVEL	CASH OUT TO WALLET	MATCHING BONUS	RE-ENTRY
2	\$0.20	\$0.40	\$0.30	\$0.05	\$0.05	N/A

\$0.30 Entry Fee **LEVEL BRONZE** **\$0.10** REFERRAL COMMISSION

MEMBERS	ENTRY FESS	TOTAL	UPGRADE TO SILVER LEVEL	CASH OUT TO WALLET	MATCHING BONUS	RE-ENTRY
4	\$0.20	\$0.80	\$0.60	\$0.10	\$0.10	N/A

\$0.60 Entry Fee **LEVEL SILVER** **\$0.20** REFERRAL COMMISSION

MEMBERS	ENTRY FESS	TOTAL	UPGRADE TO GOLD LEVEL	CASH OUT TO WALLET	MATCHING BONUS	RE-ENTRY
8	\$0.40	\$3.20	\$2.20	\$0.50	\$0.50	N/A

\$2.20 Entry Fee **LEVEL GOLD** **\$0.30** REFERRAL COMMISSION

MEMBERS	ENTRY FESS	TOTAL	UPGRADE TO PLATINUM LEVEL	CASH OUT TO WALLET	MATCHING BONUS	RE-ENTRY
16	\$1.90	\$30.40	\$20	\$5.20	\$5.20	N/A

\$20.0 Entry Fee **LEVEL PLATINUM** **\$5.00** REFERRAL COMMISSION

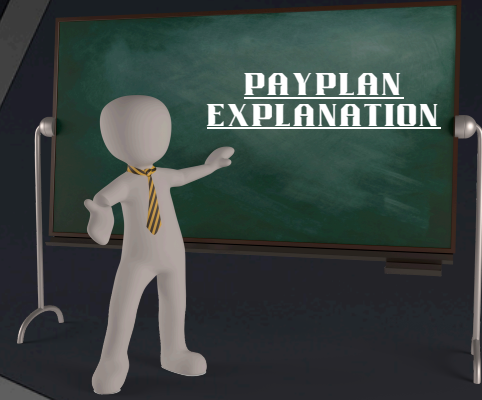
MEMBERS	ENTRY FESS	TOTAL	UPGRADE TO DIAMOND LEVEL	CASH OUT TO WALLET	MATCHING BONUS	RE-ENTRY
32	\$15	\$420	\$220	\$100	\$100	N/A

\$220.0 Entry Fee **LEVEL DIAMOND** **\$20.0** REFERRAL COMMISSION

MEMBERS	ENTRY FESS	TOTAL	UPGRADE TO LEVEL	CASH OUT TO WALLET	MATCHING BONUS	RE-ENTRY
64	\$200	12800	N/A	\$6,000	\$6,000	2 AT DIAMOND LEVEL 2 AT PLATINUM LEVEL 2 AT GOLD LEVEL 2 AT SILVER LEVEL 2 AT BRONZE LEVEL 1200 AT IRON LEVEL



PAYPLAN EXPLANATION



The 1x2 personal forced matrix shown in the image you've provided is a type of multilevel marketing (MLM) compensation plan. Here's how it generally works:

1. Matrix Structure (1x2):

- This is a "1x2" matrix, which means each level in the system consists of one person (the user) who has two "direct downline" members directly below them. Every time these two spots are filled, the user advances to the next level.

2. Levels and Entry Fees:

- Each level has a specified entry fee. Starting from the Iron level at \$0.25 to Diamond level at \$220.00. As you move up each level, the entry fees, cashouts, matching bonuses, and referral commissions increase.



PAYPLAN EXAMPLE SCENARIO



A



B

C



Imagine you (let's call you "User A") join the matrix at the Iron level with an entry fee of \$0.25.

1. Level 1 (Iron) – 1x2 Matrix:

- You (User A) recruit two people (User B and User C).
- These two people fill the two positions under you.
- As soon as your two positions are filled, you complete this level and move to the next level (Bronze).
- Rewards: You receive \$0.05 as a cashout, \$0.05 as a matching bonus, and you upgrade to Bronze with \$0.30.



		LEVEL IRON			REFERRAL COMMISSION \$0.05	
\$0.25 Entry Fee						
MEMBERS	ENTRY FESS	TOTAL	UPGRADE TO BRONZE LEVEL	CASH OUT TO WALLET	MATCHING BONUS	RE-ENTRY
2	\$0.20	\$0.40	\$0.30	\$0.05	\$0.05	N/A

PAYPLAN EXAMPLE SCENARIO

Level 2 (Bronze) – 1x2 Matrix:

- Now, Users B and C each recruit two new members (let's say Users D, E, F, and G).
- This completes their matrices at the Iron level, and they follow you to Bronze.
- As B and C fill their two spots, you earn additional matching bonuses for their efforts.
- Rewards: You cash out \$0.10, receive \$0.10 in matching bonuses, and upgrade to Silver with \$0.60.



EXTRA BONUS!!



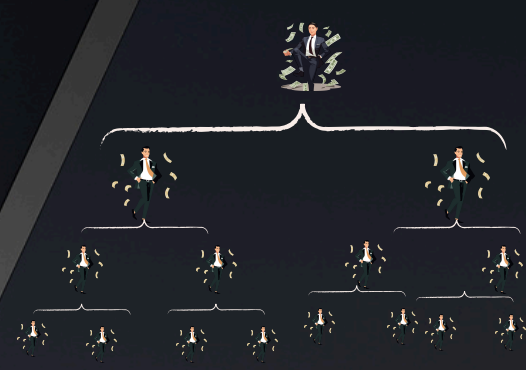
		LEVEL		REFERRAL COMMISSION		
		BRONZE		\$0.10		
\$0.30 Entry Fee						
MEMBERS	ENTRY FESS	TOTAL	UPGRADE TO SILVER LEVEL	CASH OUT TO WALLET	MATCHING BONUS	RE-ENTRY
4	\$0.20	\$0.80	\$0.60	\$0.10	\$0.10	N/A



PAYPLAN EXAMPLE SCENARIO

Level 3 (Silver) – 1x2 Matrix:

- You now have a larger team with each member filling their own 1x2 matrix, progressing up through the levels.
- This continues through each level until you reach Diamond, where the payout and bonuses are significantly larger.



PCM
POWER CRYPTO MATRIX

THANK YOU!

For a complete understanding of the pay plan, please watch our pay plan explanation video available in our Telegram channel.

If you have any questions, please read the FAQ provided on our website.

For further inquiries or to join our community, feel free to connect with us on Telegram.

